

VHCT[®]

www.vhct.co.uk

ARCHITECTURAL CONCRETE

 Royaleson

VHCT[®]
very high
concrete
technology

urbicco
design

VHCT®

VHCT ARCHITECTURAL CONCRETE · MODERN DESIGN

VHCT is the leading manufacturer of architectural concrete in Europe. Our experience and passion, combined with outstanding technical skill and aesthetic understanding, means VHCT delivers incredible results every time.

All our architectural concrete products are created to original designs, ensuring they add beauty to any environment. The standard of workmanship is nothing short of exceptional; the refined finish means they must be seen – and touched – to be believed.

Not only are they beautiful, they are also practical. Our concrete panels are made using natural raw materials and have the highest fire resistance properties of any products in their class.

In 2016 we have expanded our range to include more than 30 stunningly attractive, incredibly practical 3D boards and panels. As a result, we have become the undisputed leader amongst architectural concrete manufacturers in Europe, certified by CE quality and the NIH.



COLECTION

VHCT architectural concrete is a simple yet incredibly effective way to give any interior a sleek, minimalistic look.

Ultra-precise manufacturing techniques mean every panel is a treat for the senses, with a range of finish options that include smooth, porous, coloured, natural or with exposed aggregate. The result is a new world of architectural possibilities, where panels can be easily cut and drilled to create stunning arrangements.

Our products are equally effective outside. High frost resistance, low absorbability and resistance to ultra-violet radiation make our architectural concrete particularly suitable for facades. Advanced production technology and strict quality control ensure uniform colour and high-quality products, giving every installation a uniquely beautiful appearance.

PB 00 A



1200 x 800 mm

PB 00 B



1200 x 600 mm

PB 00 C



1000 x 500 mm

PB 00 D



900 x 550 mm

White



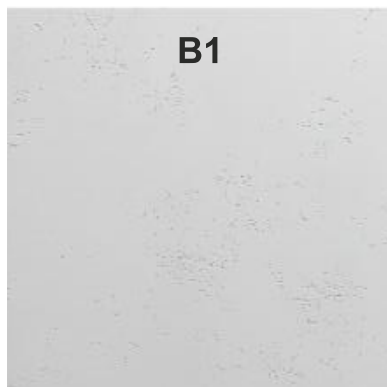
BS

Shaded white



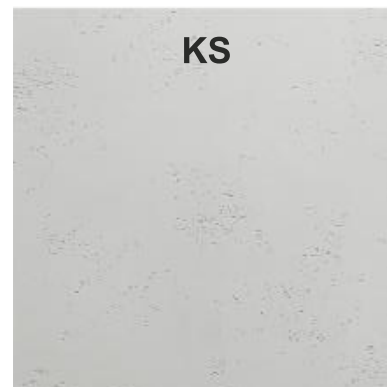
B0

Cloud white



B1

Sand



KS

Light Gray



S50

PB 00 E



900 x 450 mm

PB 00 F



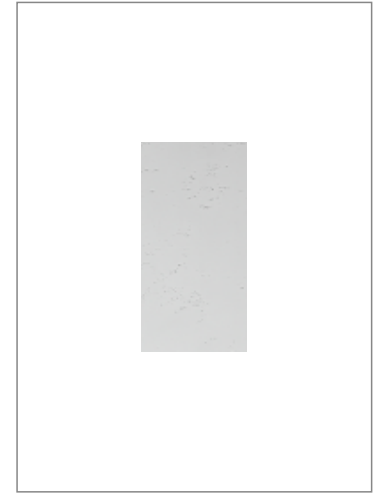
- TERRACE PLATE 800 x 800 mm

PB 00 G



600 x 600 mm

PB 00 H



600 x 300 mm



Gray

S95

Dark Gray

S51

Ash Gray

S96

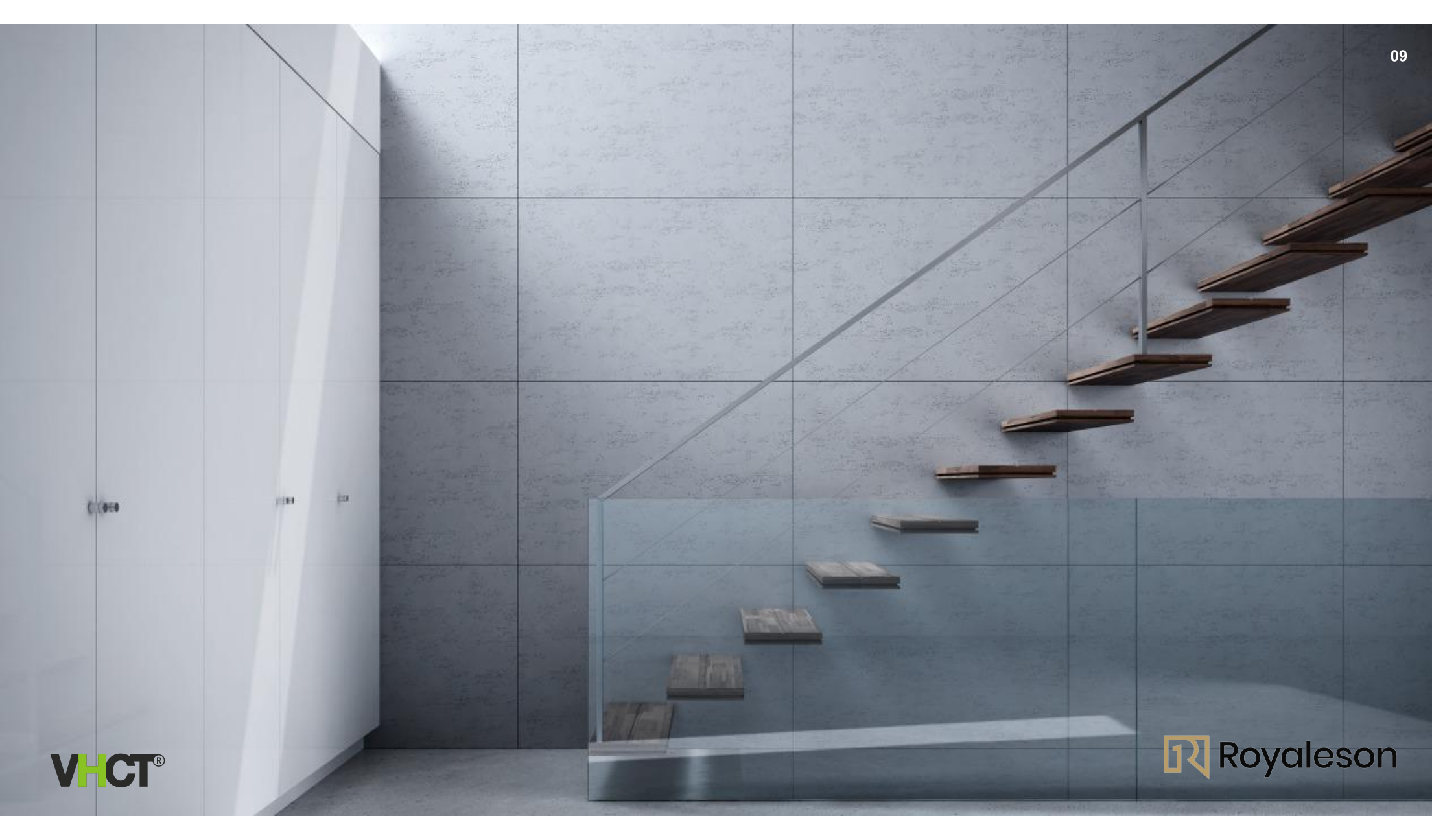
Anthracite

B8

Black

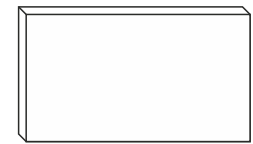
B15





VHCT®

 Royaleson



1200 x 800 x 20 mm

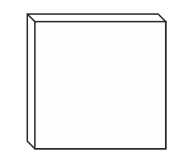
PB
00





VHCT®

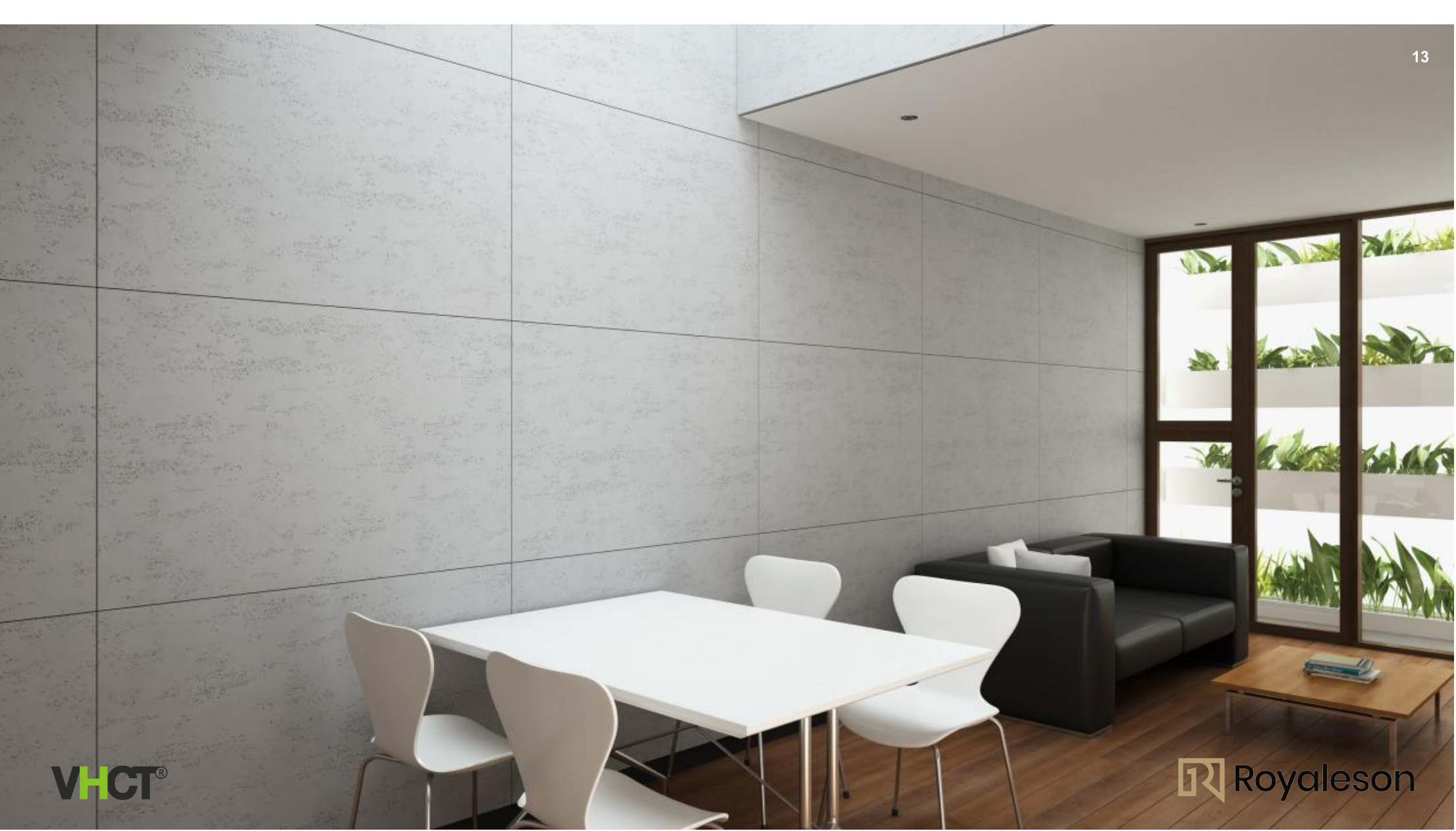
Royaleson



600 x 600 x 15 mm

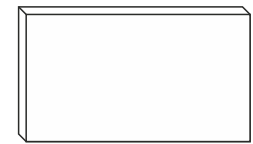
PB
00





VHCT®

Royaleson




1200 x 800 x 20 mm

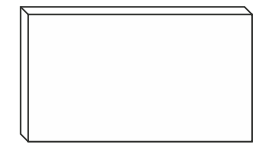
PB
00





VHCT®

 Royaleson



1200 x 600 x 20 mm

PB
00

COLECTION **3D**



PB
05

urbicco
design



PB
30

PB
13

VHCT[®]



PB
09

PB
30

 Royaleson

PB
16

 Royaleson

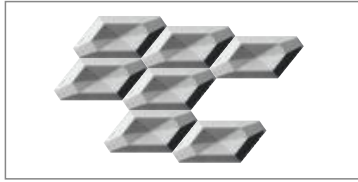
VHCT[®]



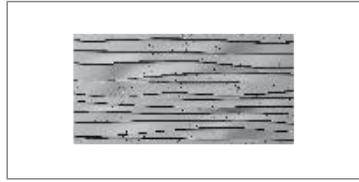
PB 01



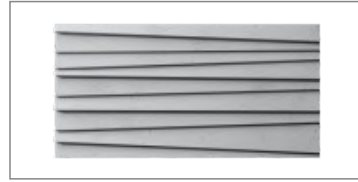
PB 02



PB 03



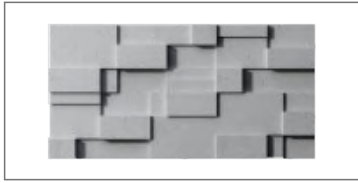
PB 04



PB 05



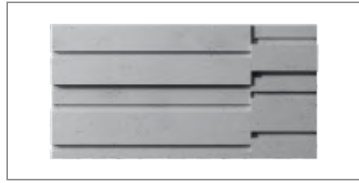
PB 11



PB 12



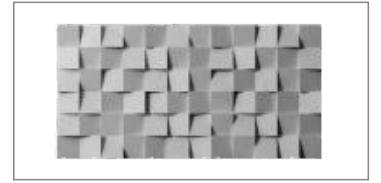
PB 13



PB 14



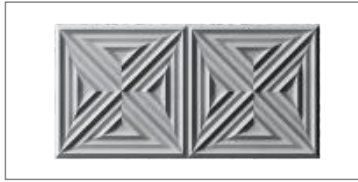
PB 15



PB 21



PB 22



PB 23



PB 24



PB 25



PB 31



PB 32



urbicco
design

White

BS

Shaded white

B0

Cloud white

B1

Sand

KS

Light Gray

S50

PB 06



PB 07



PB 08



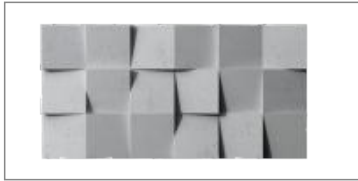
PB 09



PB 10



PB 16



PB 17



PB 18



PB 19



PB 20



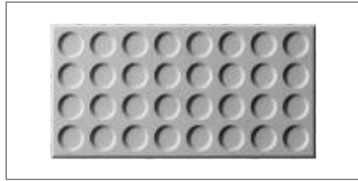
PB 26



PB 27



PB 28



PB 29



PB 30



Gray

S95

Dark Gray

S51

Ash Gray

S96

Anthracite

B8

Black

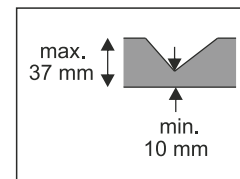
B15





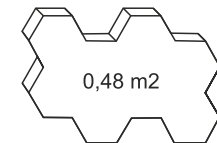
VHCT®

 **Royalesson**



0,06 m²

260 x 300 x 37 mm



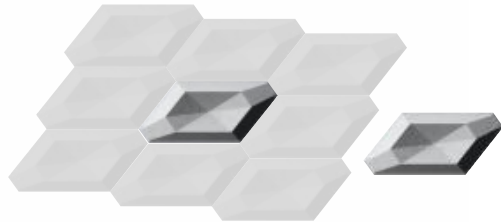
0,48 m²

975 x 650 x 35 mm

**PB
01**



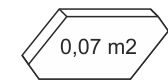
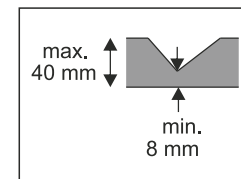
urbicco
design





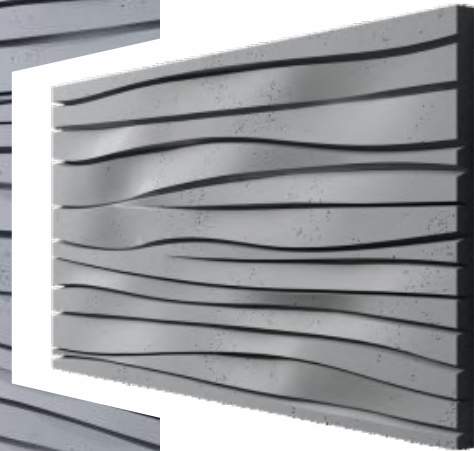
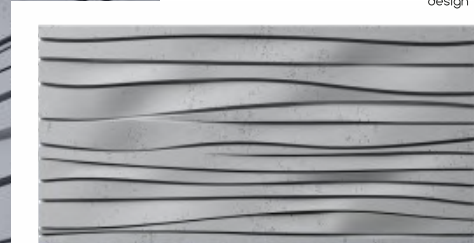
VHCT®

Royaleson



448 x 200 x 40 mm

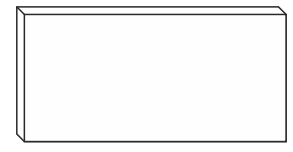
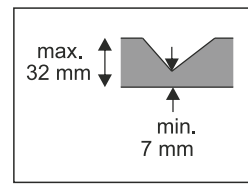
PB
02





VHCT®

Royaleson

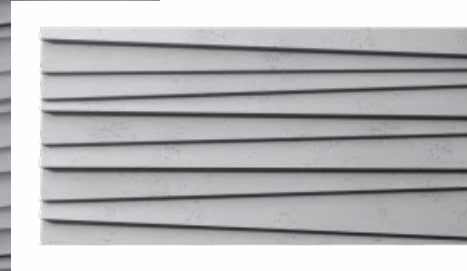


1000 x 500 x 32 mm

PB
03

PB
04

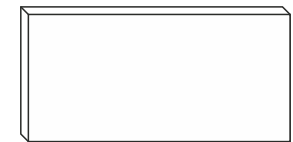
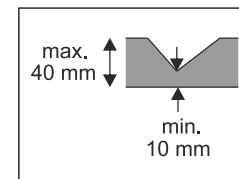
urbicco
design





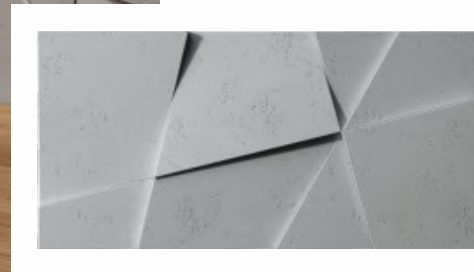
VHCT®

Royaleson



1200 x 600 x 40 mm

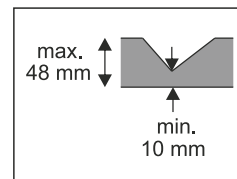
PB
04





VHCT®

Royaleson



1200 x 600 x 48 mm

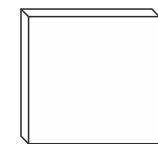
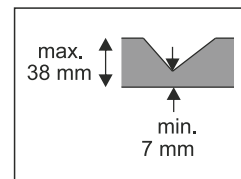
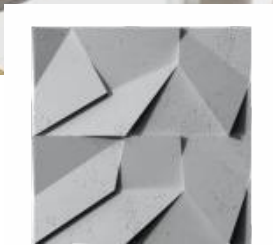
PB
05





VHCT[®]

Royaleson

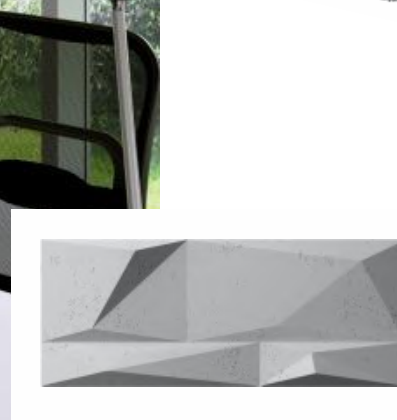


600 x 600 x 38 mm



1200 x 600 x 38 mm

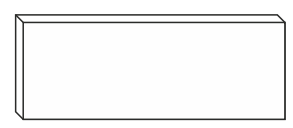
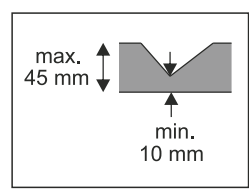
**PB
06**



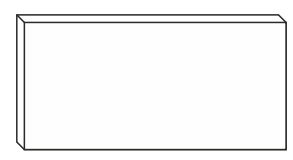


VHCT®

Royaleson



1200 x 400 x 45 mm



1200 x 600 x 45 mm

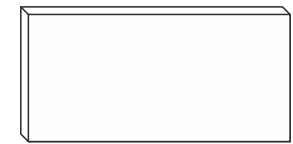
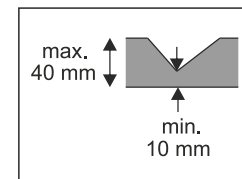
PB
07





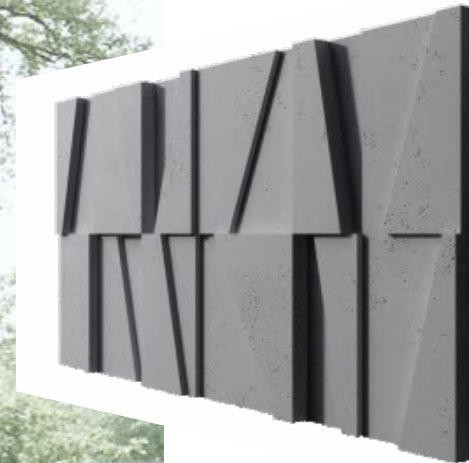
VHCT®

Royaleson



1200 x 600 x 40 mm

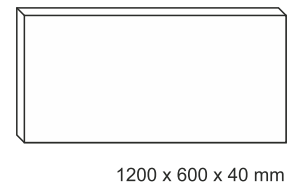
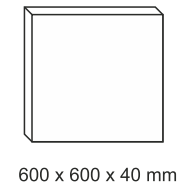
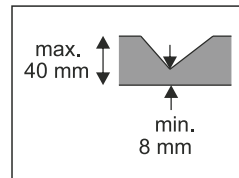
PB
08





VHCT®

Royaleson



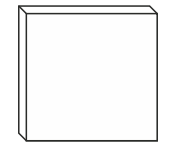
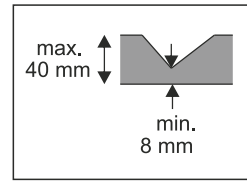
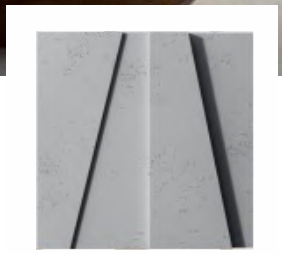
PB
09



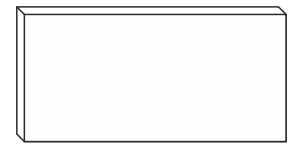


VHCT®

Royaleson

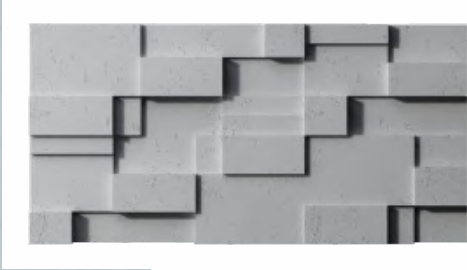


600 x 600 x 40 mm



1200 x 600 x 40 mm

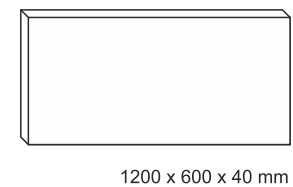
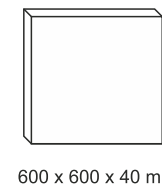
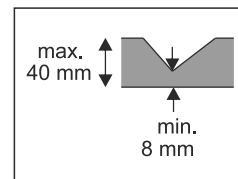
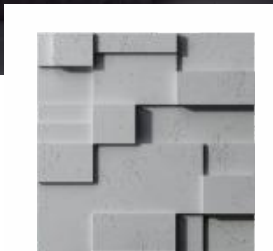
PB
10



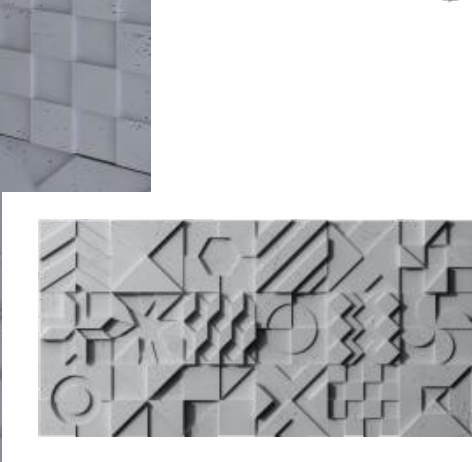


VHCT®

Royaleson



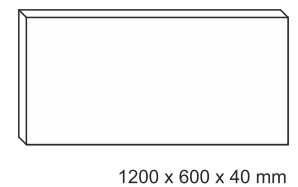
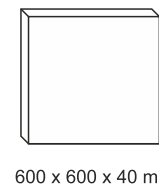
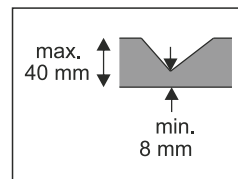
PB
11



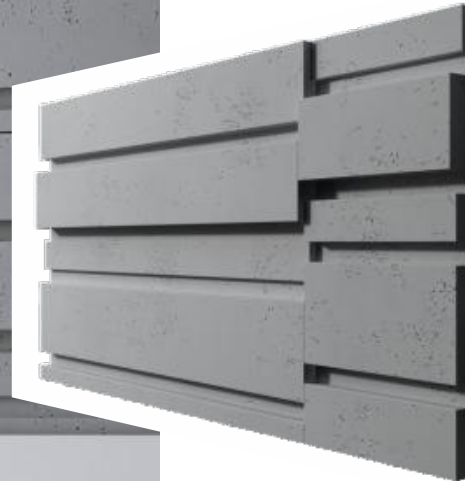


VHCT®

Royaleson



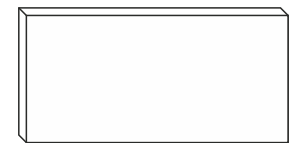
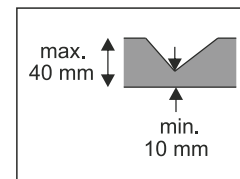
PB
12





VHCT®

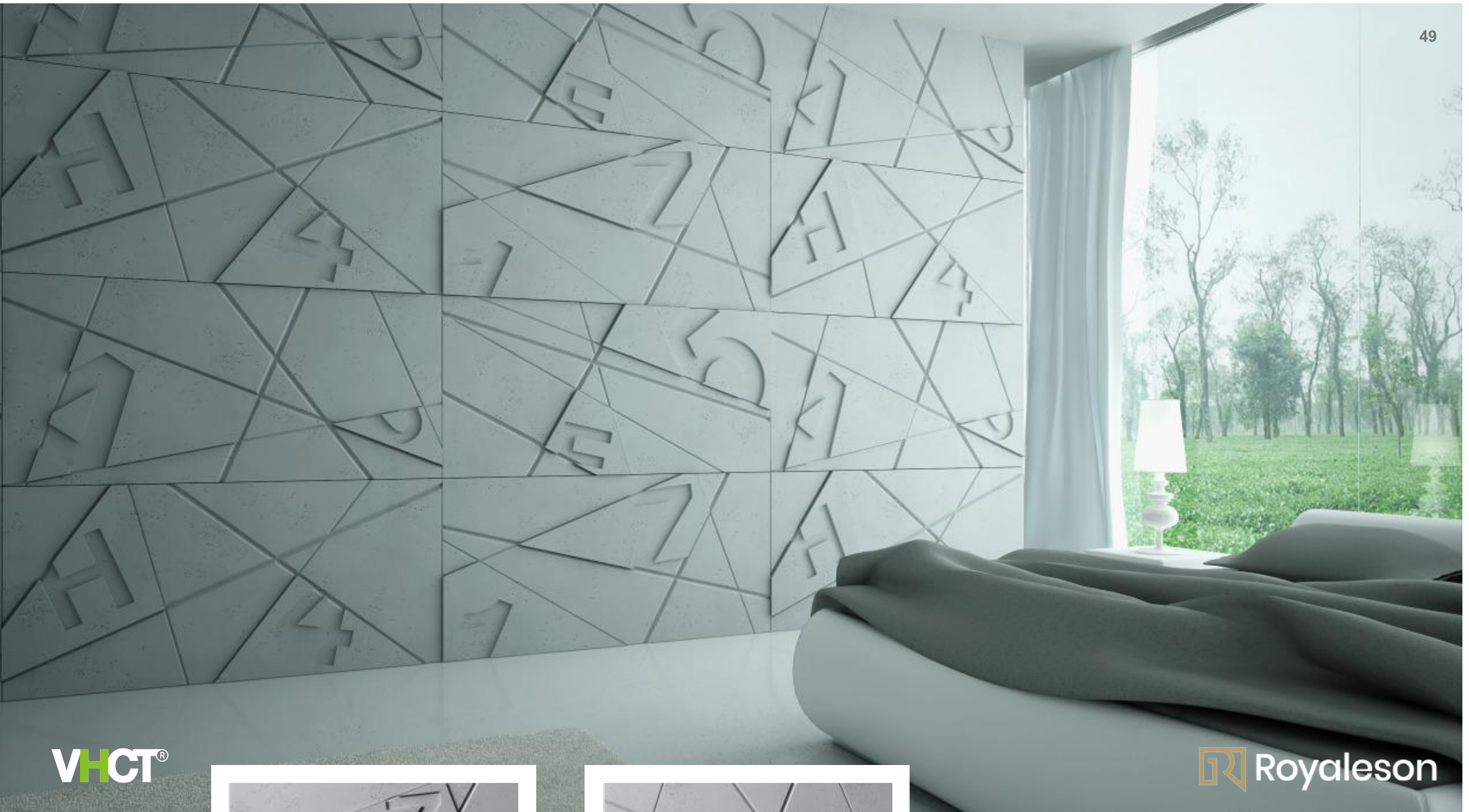
Royaleson



1200 x 600 x 40 mm

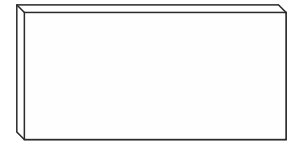
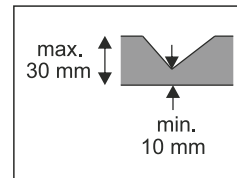
PB
13





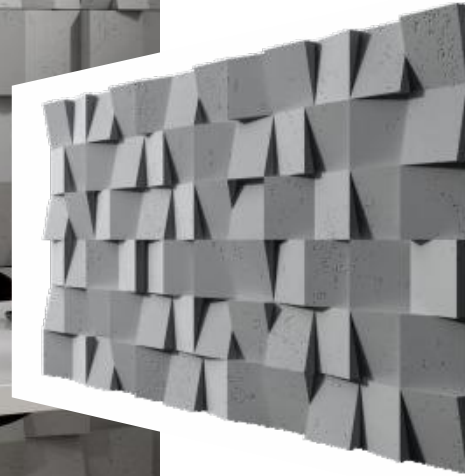
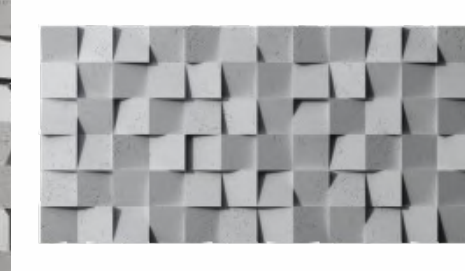
VHCT®

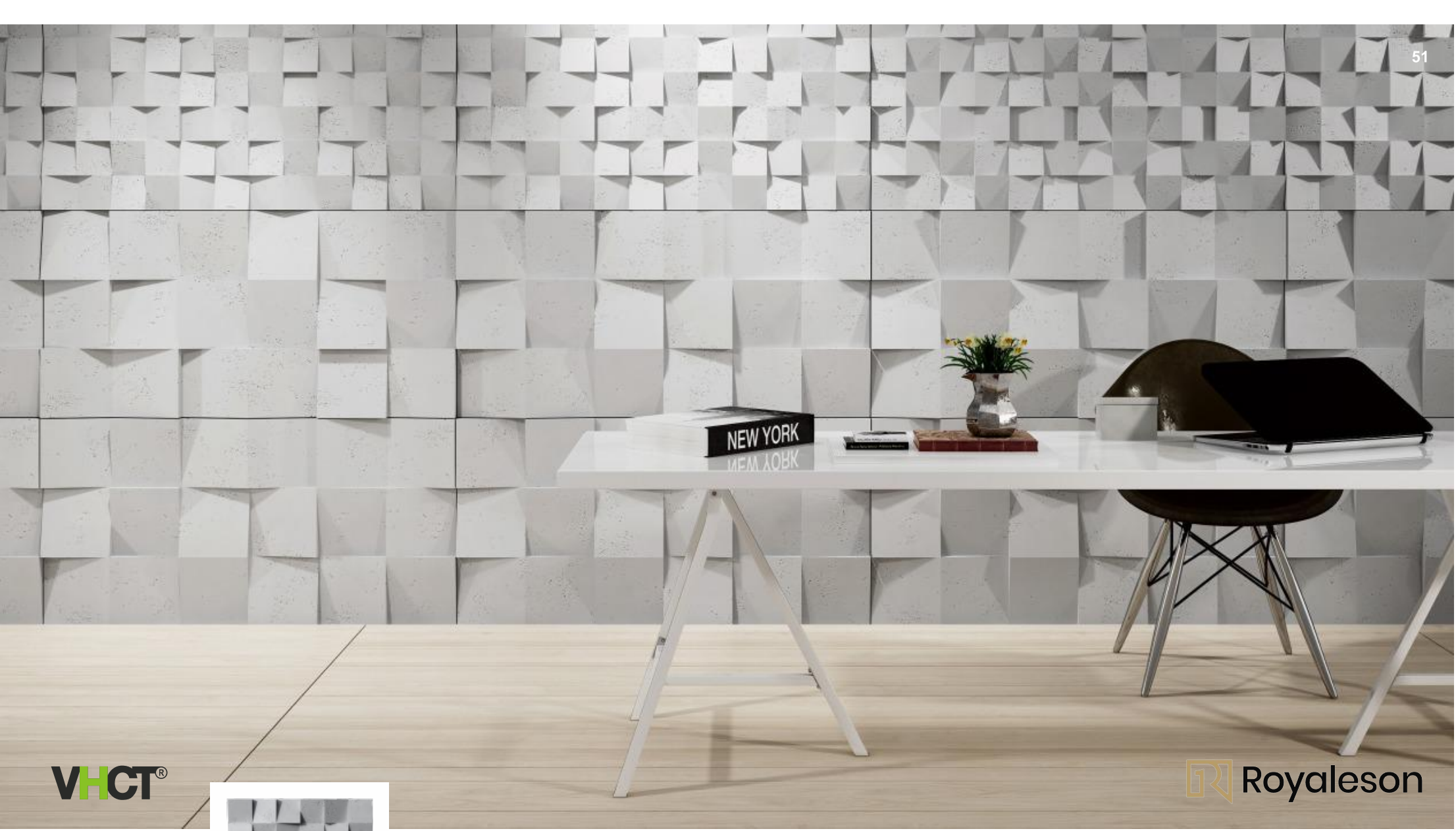
Royaleson



1200 x 600 x 30 mm

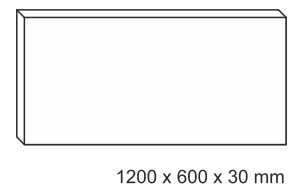
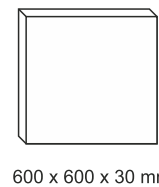
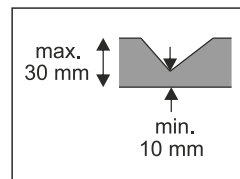
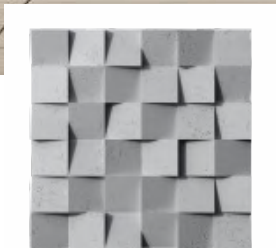
PB
14





VHCT®

Royaleson



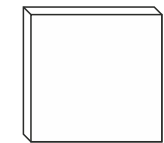
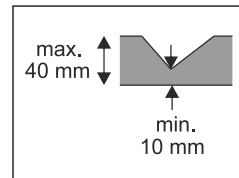
PB
15



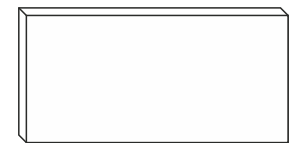


VHCT®

Royaleson



600 x 600 x 40 mm



1200 x 600 x 30 mm

PB
16

PB
17

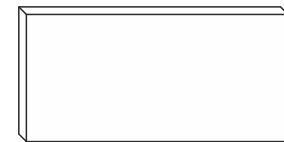
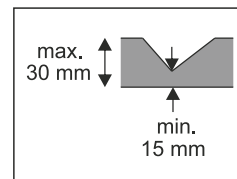
urbicco
design





VHCT®

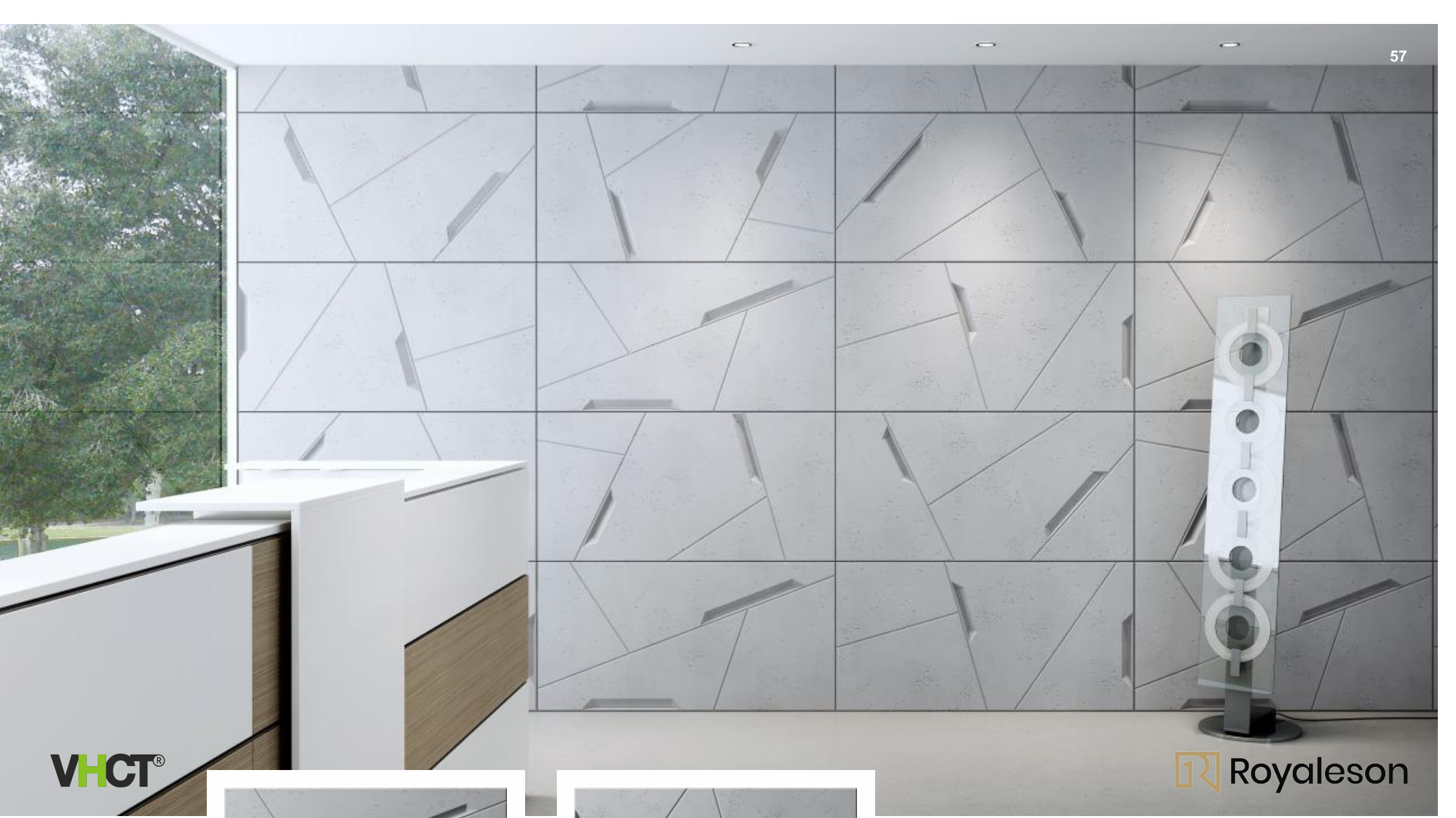
Royaleson



1200 x 600 x 30 mm

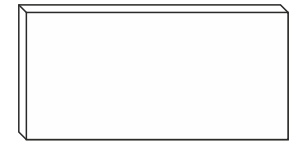
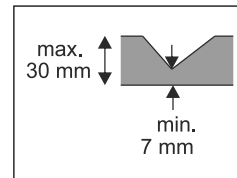
PB
17





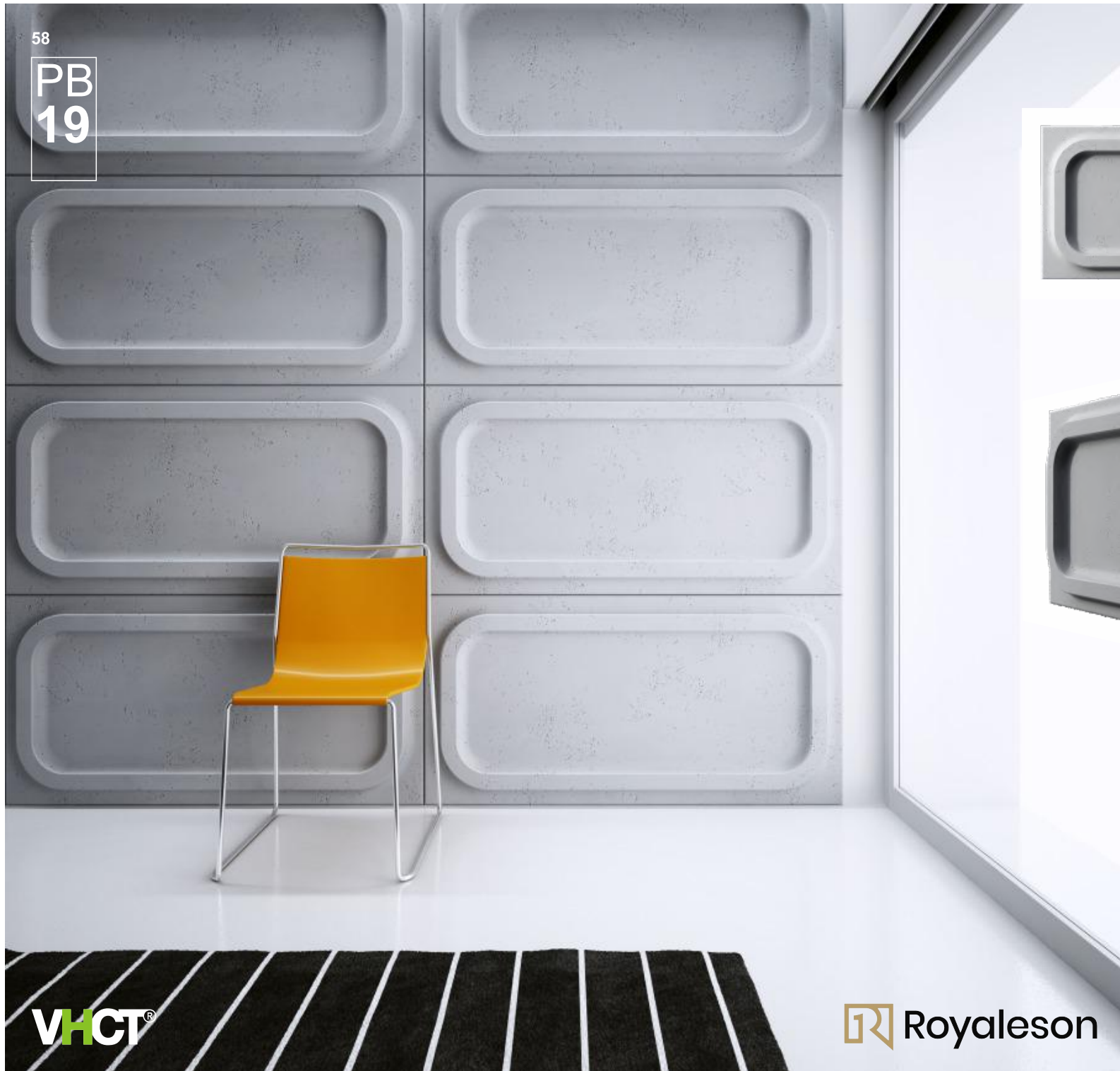
VHCT®

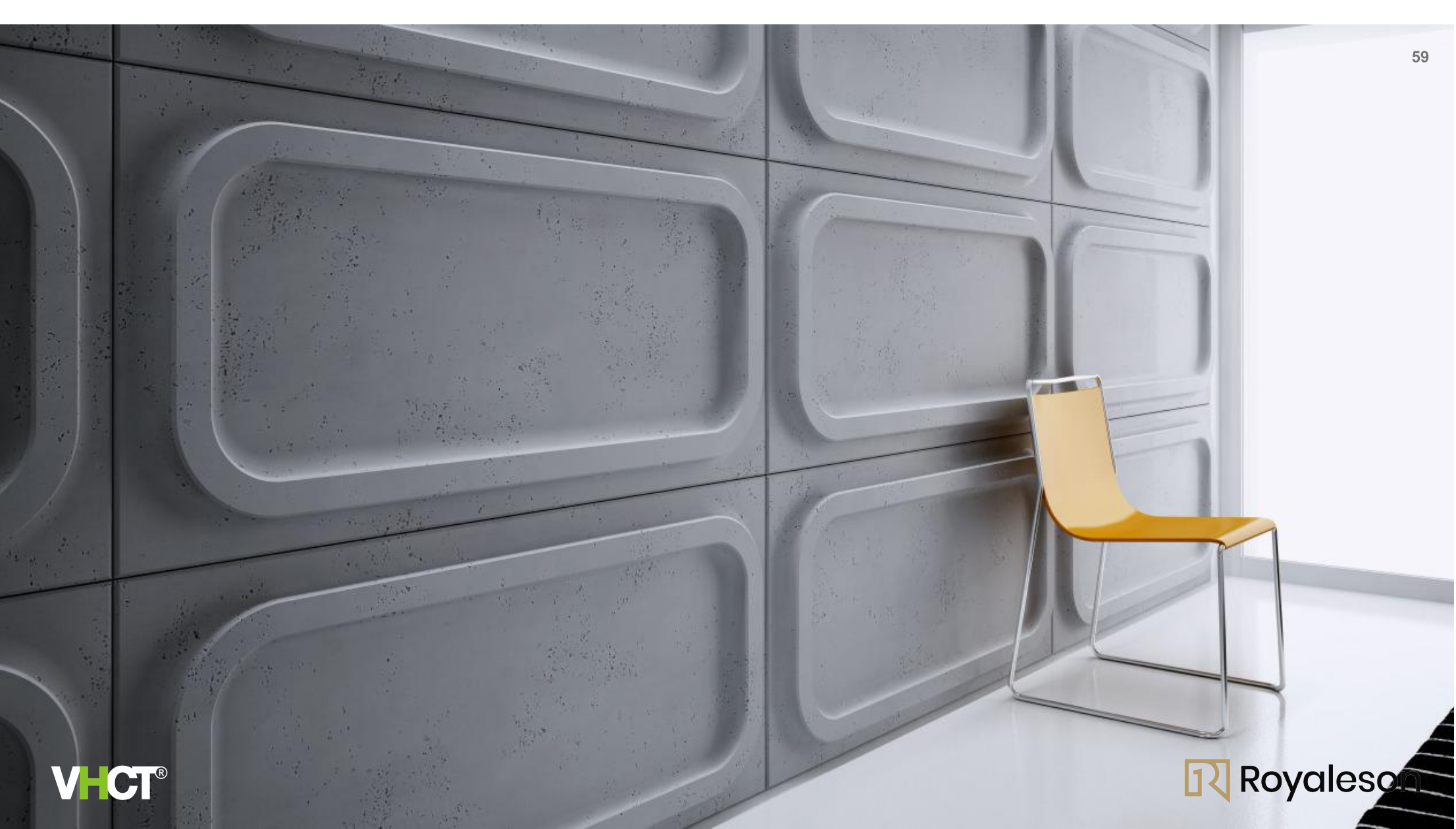
Royaleson



1200 x 600 x 30 mm

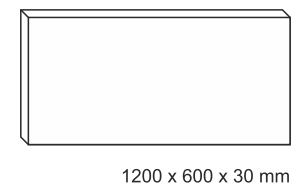
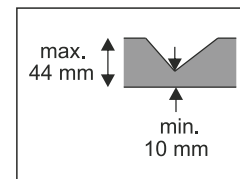
PB
18



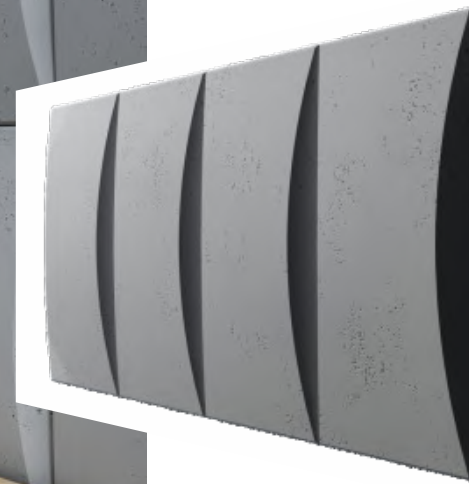


VHCT®

 Royalesson



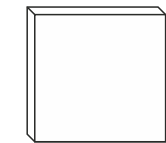
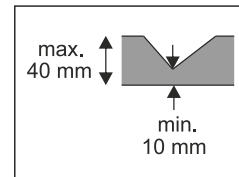
PB
19



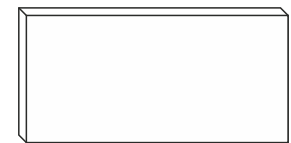


VHCT®

Royaleson



600 x 600 x 40 mm



1200 x 600 x 40 mm

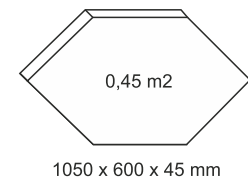
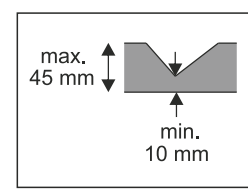
PB
20



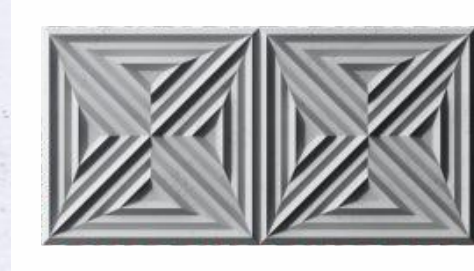


VHCT®

Royaleson



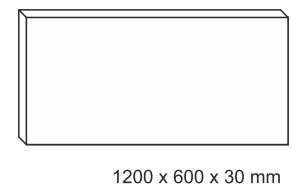
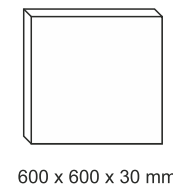
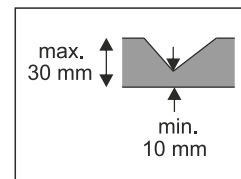
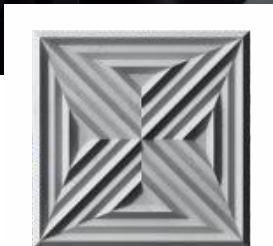
PB
21



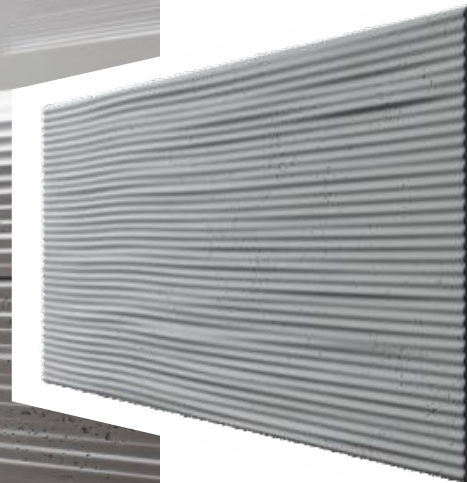


VHCT®

Royaleson



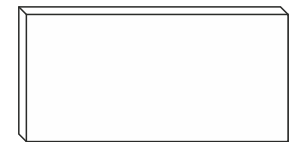
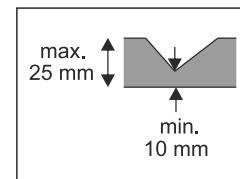
PB
22





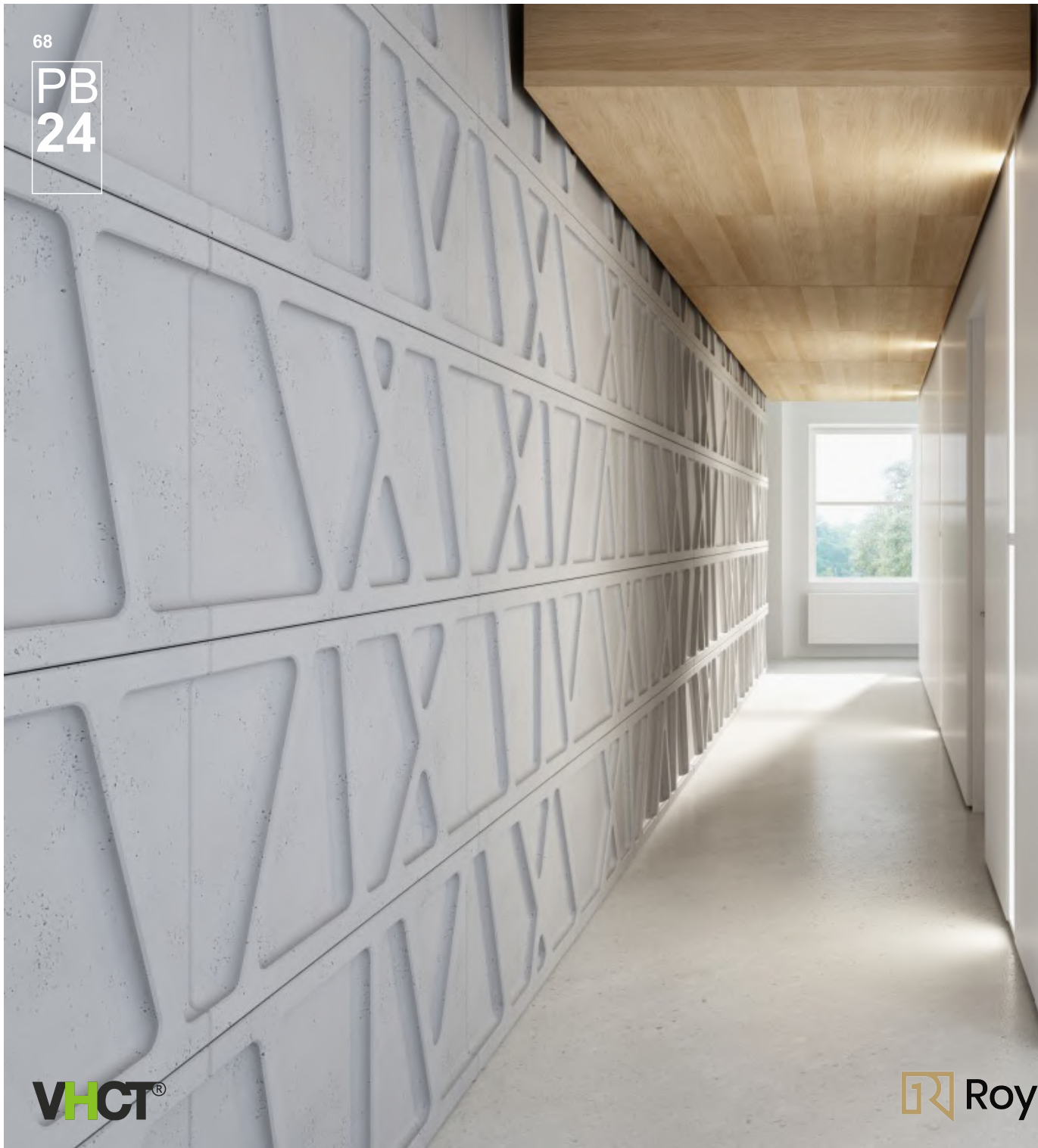
VHCT®

Royaleson



1200 x 600 x 25 mm

PB
23

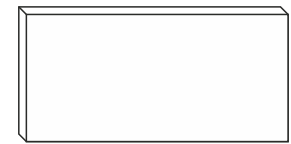
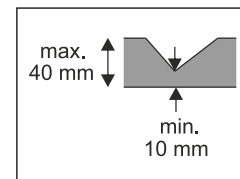




VHCT®

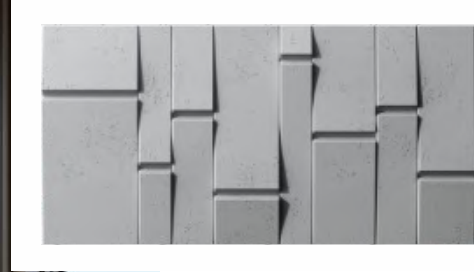


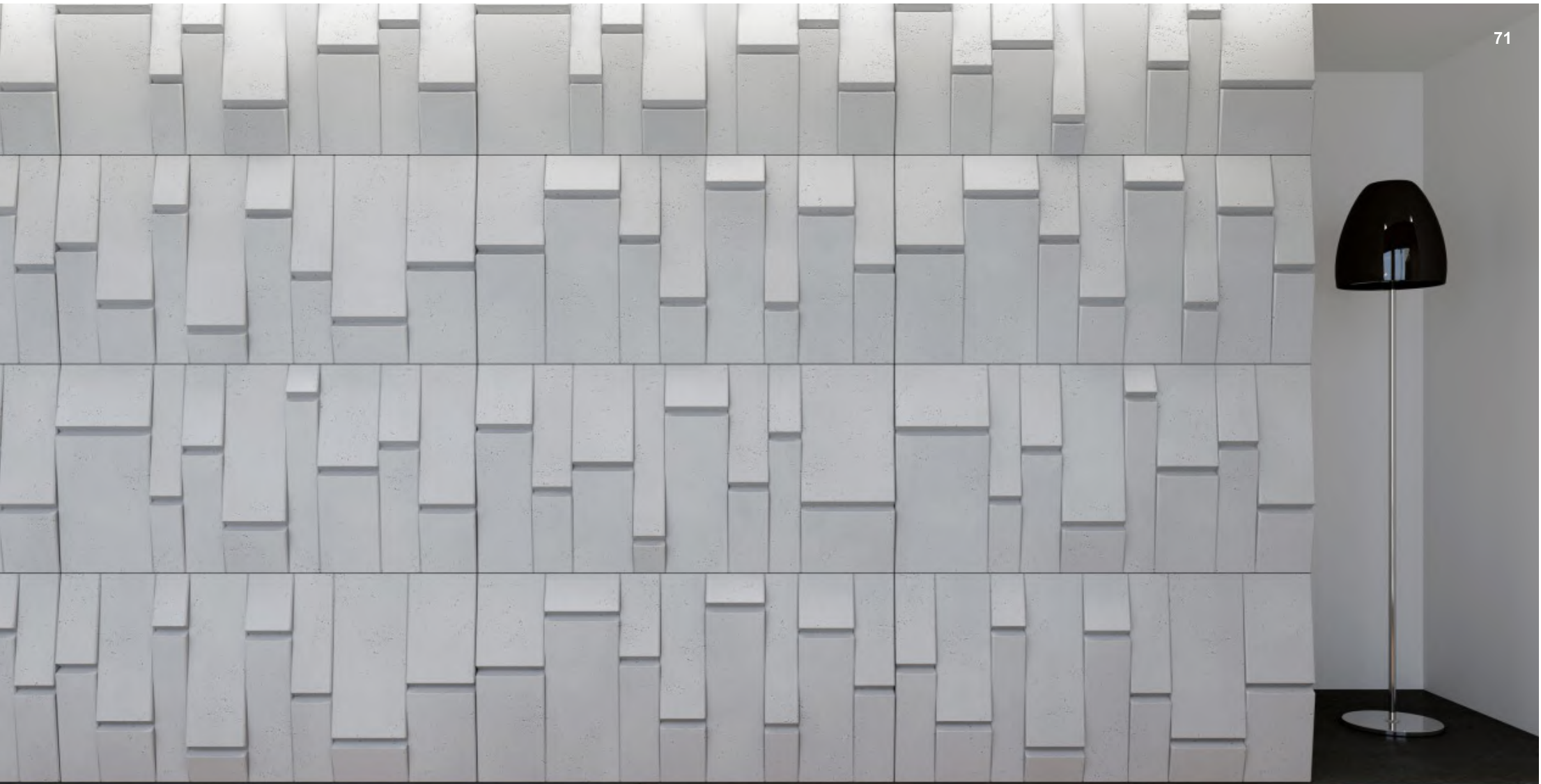
Royaleson



1200 x 600 x 40 mm

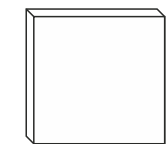
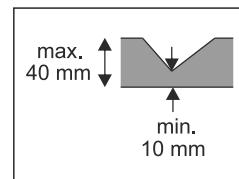
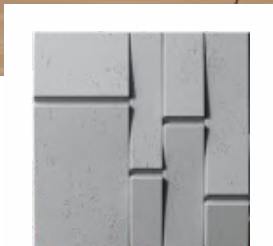
PB
24





VHCT®

Royaleson

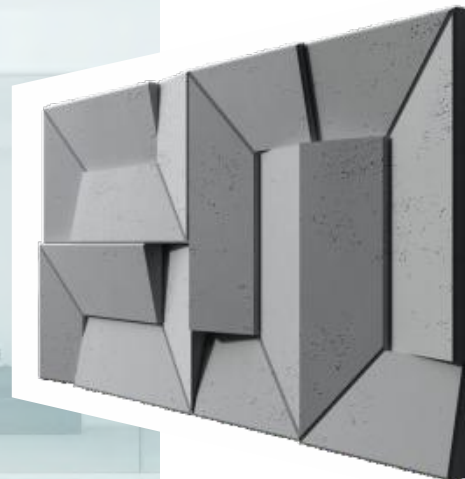
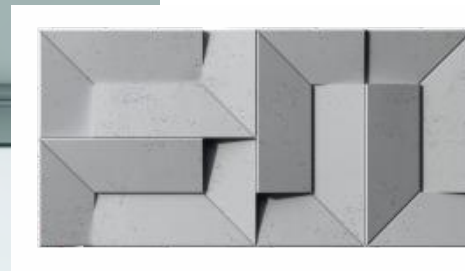


600 x 600 x 40 mm



1200 x 600 x 40 mm

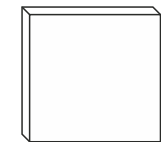
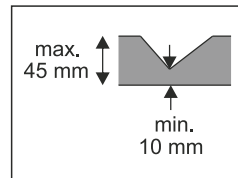
PB
25





VHCT®

Royaleson

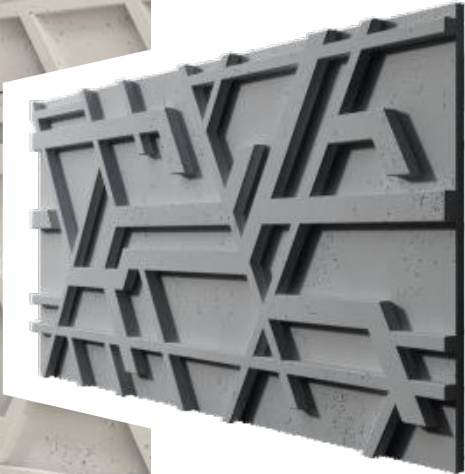


600 x 600 x 45 mm



1200 x 600 x 45 mm

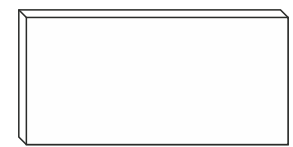
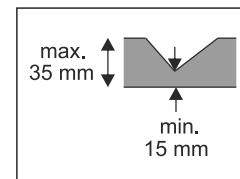
PB
26





VHCT®

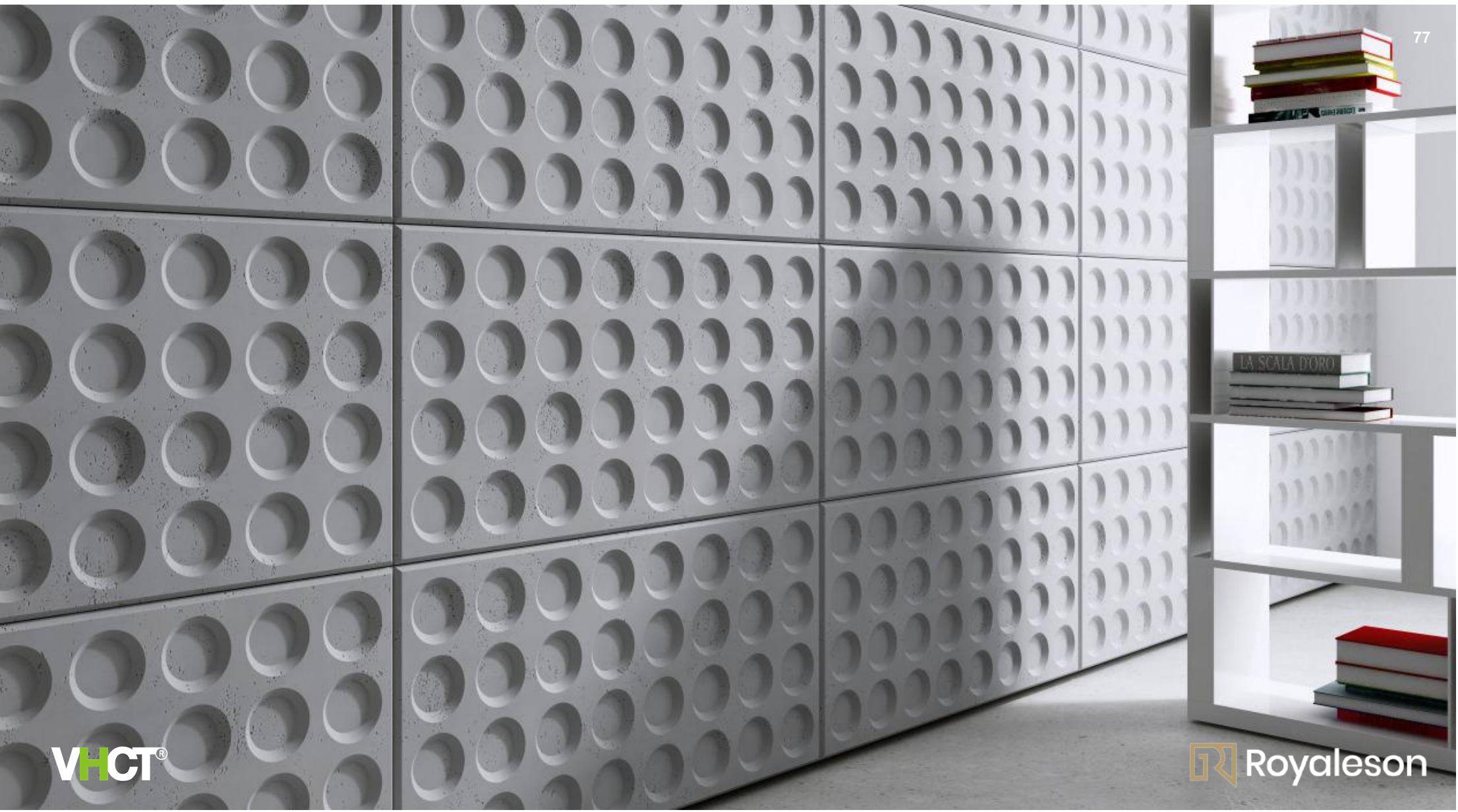
Royaleson



1200 x 600 x 35 mm

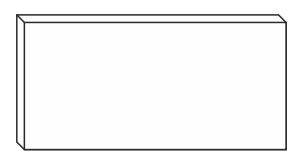
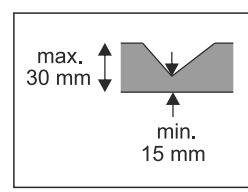
PB
27





VHCT®

Royaleson



1200 x 600 x 30 mm

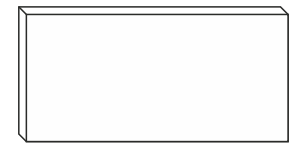
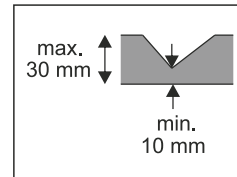
PB
28





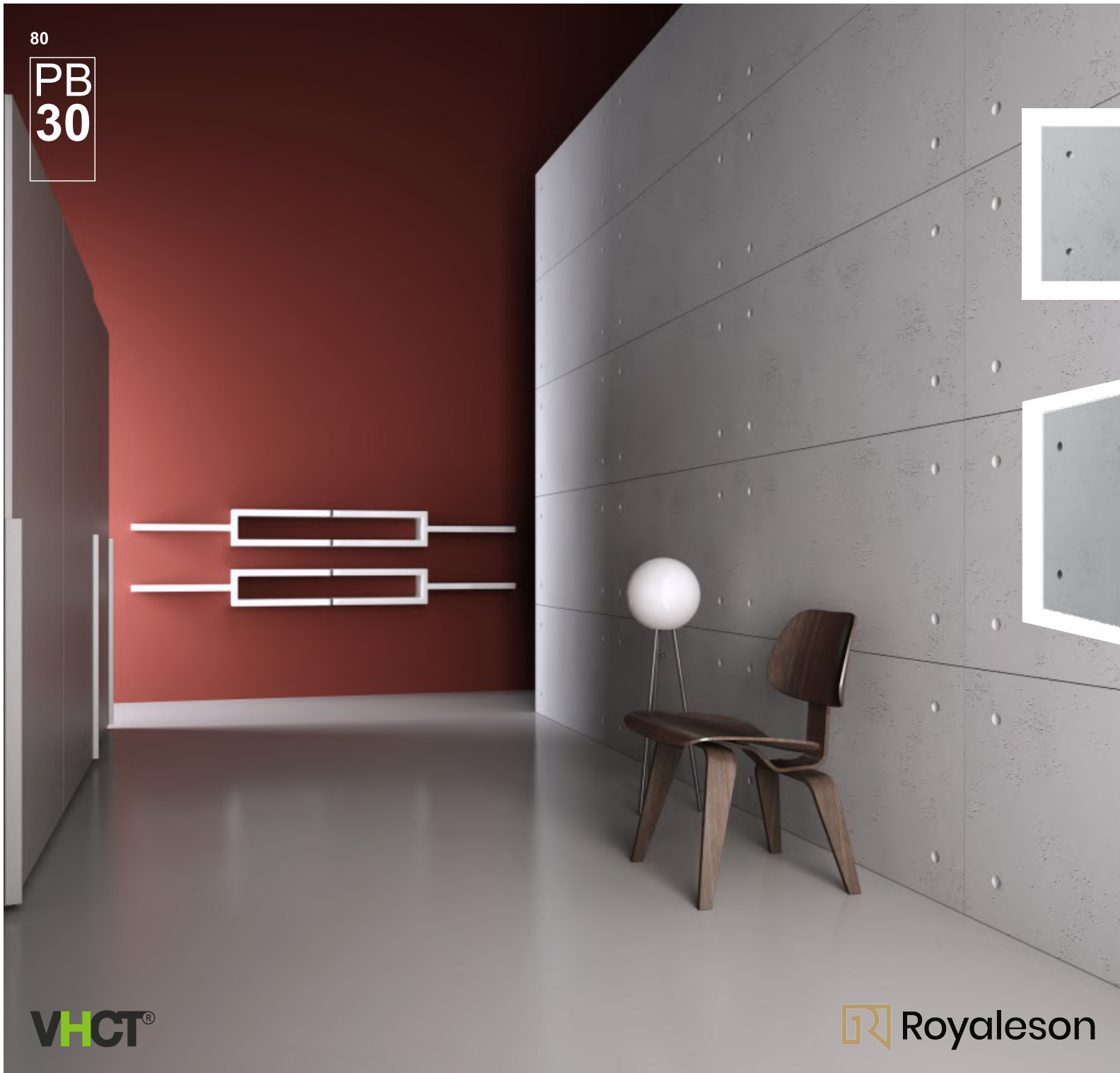
VHCT®

Royaleson



1200 x 600 x 30 mm

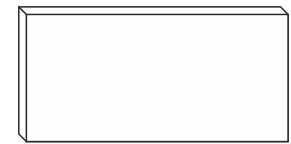
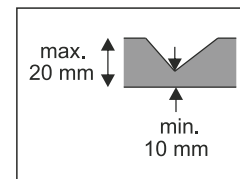
PB
29





VHCT®

Royaleson



1200 x 600 x 20 mm

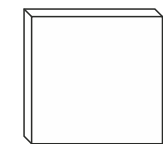
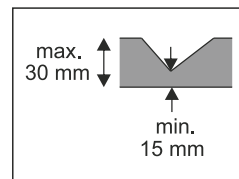
PB
30





VHCT®

Royaleson



600 x 600 x 30 mm



1200 x 600 x 30 mm

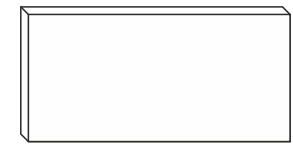
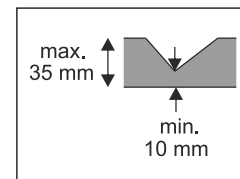
PB
31





VHCT®

Royaleson



1200 x 600 x 35 mm

PB
32

Concrete
PLANTERS

D 44 A



440 x 440 x 500 mm

D 44 B



440 x 440 x 700 mm

D 44 C



440 x 440 x 900 mm

D 44 D



440 x 440 x 1200 mm

D 40 A



400 x 300 x 900 mm

D 39 A



390 x 290 x 600 mm

D 36 A



360 x 260 x 600 mm

urbico
design

D 54 A



540 x 540 x 500 mm

D 54 B



540 x 540 x 700 mm

D 54 C



540 x 540 x 900 mm

D 54 D



540 x 540 x 1200 mm

urbicco
design

90

D
40

VHCT®
design



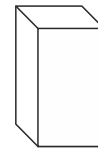
VHCT®

Royaleson

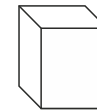


VHCT®

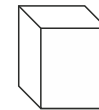
Royaleson



400 x 300 x 900 mm



390 x 290 x 600 mm



360 x 260 x 600 mm

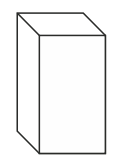
D
40



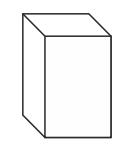


VHCT®

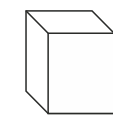
Royaleson



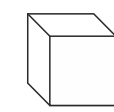
440 x 440 x 1200 mm



440 x 440 x 900 mm



440 x 440 x 700 mm



440 x 440 x 500 mm

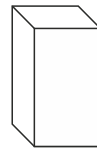




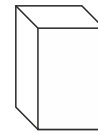


VHCT®

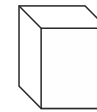
Royaleson



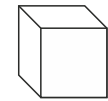
540 x 540 x 1200 mm



540 x 540 x 900 mm



540 x 540 x 700 mm



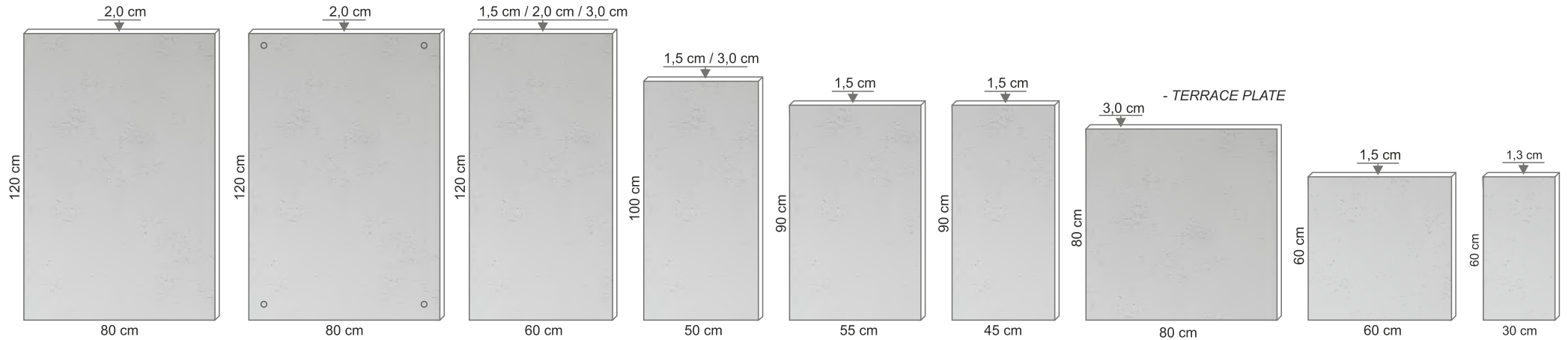
540 x 540 x 500 mm

D
54

TYPE OF PLATE		TECHNICAL SPECIFICATIONS		
FORMAT (mm)		NUMBER OF PIECES ON PALLET	WEIGHT (1 piece)	ASSEMBLY METHOD
W / H / T	PCS / sqm	PCS / Pallet	KG	
600 x 300 x 10	5,55	240 / 43,2	3,3	ADHESIVE
600 x 600 x 20	2,77	64 / 23,04	13	ADHESIVE-BOLTS
600 x 600 x 15	2,77	64 / 23,04	11	ADHESIVE-BOLTS
900 x 450 x 15	2,5	25 / 10,125	10	ADHESIVE-BOLTS
900 x 550 x 15	2,02	25 / 12,375	11,5	ADHESIVE-BOLTS
1000 x 500 x 15	2	32 / 17,5	15,2	ADHESIVE-BOLTS
1000 x 500 x 20	2	32 / 17,5	15,2	ADHESIVE-BOLTS
1200 x 600 x 15	1,4	25 / 18	22	ADHESIVE-BOLTS
1200 x 600 x 20	1,4	30 / 21,6	26	ADHESIVE-BOLTS
1200 x 600 x 30	1,4	26 / 18,72	33	ADHESIVE-BOLTS-ANCHORS
800 x 800 x 30	1,56	22 / 14,08	42	PLACING ON FOUNDATIONS



PLATES DIMENSIONS



DECLARED PROPERTIES

ESSENTIAL CHARACTERISTICS	PROPERTIES	HARMONISED TECHNICAL SPECIFICATION
Concrete cladding	Strength class 30/37	PN-EN 14992+A1:2012 PN-EN 13369:2013-09
Tensile strength in bending	≥ 2,0 (Mpa)	
Density class	1,8	
Dimension tolerance	Class A (±3 mm)	
Reaction to fire	Euroclass A1	
Water vapour permeability	μ = 5/15	
Dimensional stability under the influence of moisture and drying. Shrinkage due to drying out (inside/outside)	0,60/0,34 (mm/m)	
Insulation from direct airborne sound	Gross density ≤ 1800 kg/m3	
Resistance to freezing and thawing with de-icing agents	< 0,6 kg/m2	
Abrasion class	4	
Application	Outside - inside	

I STORAGE

1. The slabs should be stored separately in a dry and well-ventilated place.

II BEFORE INSTALLATION

1. Any damage and defects of architectural concrete slabs must be reported prior to installation
2. In order to maintain the natural appearance of the wall it is recommended to simultaneously use slabs from various locations on the pallet
3. The cement and lime wall should be thoroughly cleaned of dust and paint
4. Make sure that it is the load-bearing wall and that it is properly primed. It is recommended to use "PERFECT GRUNT VHCT" for priming

III INSTALLATION

1. To glue VHCT concrete slabs it is recommended to use the "VHCT SILVER" cement glue. To glue architectural concrete on difficult surfaces, façades, fences, floors, on gypsum boards, Oriented Strand Boards (after removing the protective coating) use cement two-component glue "VHCT CONNECT TOP 1"
2. Follow the instructions of glue manufacturer
3. It is recommended to use glue comb
4. During installation, use clean gloves
5. Any dirt should be removed immediately (before it dries)
6. Architectural concrete slabs should be mounted with a gap of about 3 mm between the slabs. The gap should be left unfilled.
7. All work with concrete must be carried out using diamond tools. In addition, use non-percussion drills intended for drilling in concrete.
8. Cleaning agents, for example: plain hot water or soapy water
9. It is recommended to use "VHCT PERFECT IMPREGNAT" as impregnating agent



VHCT Quality Certificate

Architectural concrete holds the CE mark and is produced according to the standard applying to elements of concrete walls **PN-EN 14992 + A1: 2012** Patio slabs measuring 80x80x3 (cm) meet the requirements of standard **PN-EN 13748 – 2 : 2006 / Ap1 : 2006** - Terrazzo tiles. Part 2: Terrazzo tiles for external use.

All work must be carried out in accordance with the rules of the art. The above description has been drawn up based on the knowledge and experience of the manufacturer. At the construction site, always check individual conditions for installation. If you have any questions, please contact us at the following address: biuro@vhct.pl

- Milled edges
- Porous texture
- Imitation of formwork anchors
- Perfectly sharp edges
- Porous texture
- (Italian travertine) or smooth



White



Shaded white



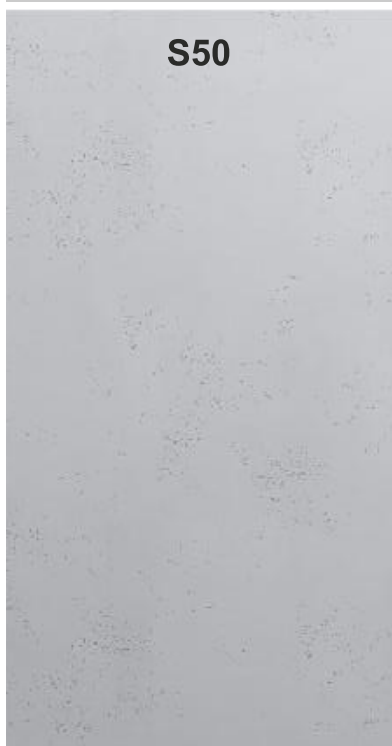
Cloud white



Sand



Light Gray





Gray

S95

Dark Gray

S51

Ash Gray

S96

Anthracite

B8

Black

B15



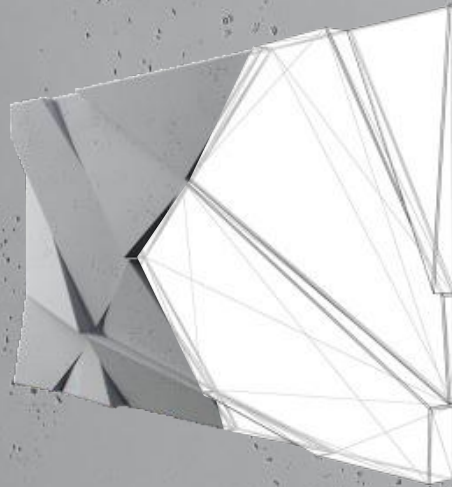
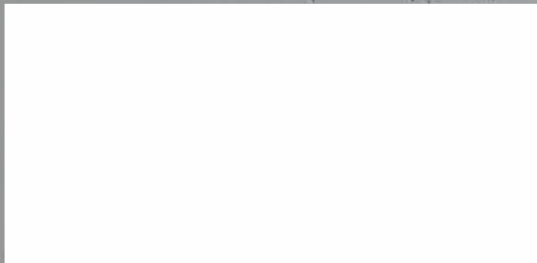
VHCT LTD

4 Park Road
TW11 0AA Teddington
London Borough of Richmond

contact us:
T : +44 (0)208 549 5835
E : office@vhct.co.uk

www.vhct.co.uk

Representative/ distributor:



VHCT Quality Certificate